

CONDOMINIUM ACT

STRATA LOT	SHEET NUMBER	FORM 1 SCHEDULE OF UNIT ENTITLEMENT	FORM 2 SCHEDULE OF INTEREST UPON DESTRUCTION	FORM 3 SCHEDULE OF VOTING RIGHTS
1	11	15	70	0.26
2	11	25	60	0.44
3	11, 26	29	70	0.51
4	11	31	100	0.56
5	11	16	60	0.28
6	11	20	60	0.36
7	11	17	60	0.31
8	11	12	26	0.20
9	11, 26	12	40	0.46
10	11	11	40	0.17
11	11	10	40	0.17
12	11	12	40	0.17
13	11	12	40	0.17
14	11, 27	65	200	1.16
15	11	9	40	0.17
16	11, 27	10	40	0.17
17	11, 27	10	40	0.17
18	11, 12	10	40	0.17
19	11, 12	10	40	0.17
20	11, 12	10	40	0.17
21	11, 12	10	40	0.17
22	11, 12	10	40	0.17
23	11, 12, 26	54	115	0.64
24	11, 12	54	120	0.67
25	11, 12	53	106	0.59
26	11, 12	55	107	0.60
27	11, 12	54	107	0.60
28	11, 12, 26	54	107	0.60
29	11, 12, 26	54	107	0.60
30	11, 12	54	107	0.60
31	11, 12	54	107	0.60
32	13, 26	129	176	1.00
33	13, 26	129	176	1.00
34	13, 26	129	176	1.00
35	13	36	70	0.37
36	13, 26	36	70	0.37
37	13, 26	36	70	0.37
38	13	36	70	0.37
39	13	36	70	0.37
40	13	36	70	0.37
41	13	36	70	0.37
42	13, 27	38	80	0.44
43	13, 27	38	80	0.44
44	13, 27	38	80	0.44
45	13	38	80	0.44
46	13, 27	38	80	0.44
47	13	38	80	0.44
48	13	38	80	0.44
49	13, 26	46	100	0.61
50	13, 26	46	100	0.61

NOTICE 29th, 1986 S-9194

CONDOMINIUM ACT

STRATA LOT	SHEET NUMBER	FORM 1 SCHEDULE OF UNIT ENTITLEMENT	FORM 2 SCHEDULE OF INTEREST UPON DESTRUCTION	FORM 3 SCHEDULE OF VOTING RIGHTS
51	13	37	70	0.37
52	13	36	70	0.37
53	14	62	160	1.00
54	14	36	60	0.37
55	14, 26	36	70	0.37
56	14, 26	36	70	0.37
57	14	36	70	0.37
58	14	36	70	0.37
59	14	36	70	0.37
60	14	36	70	0.37
61	14	36	70	0.37
62	14, 27	46	100	0.61
63	14, 27	46	100	0.61
64	14	46	100	0.61
65	14, 27	30	80	0.50
66	14	30	80	0.50
67	14	30	80	0.50
68	14, 26	49	120	0.75
69	14, 26	37	80	0.50
70	14	37	80	0.50
71	14	36	80	0.50
72	15, 16	88	210	1.37
73	15, 16	54	107	0.64
74	15, 16, 26	54	107	0.64
75	15, 16, 26	54	107	0.64
76	15, 16	54	107	0.64
77	15, 16	54	107	0.64
78	15, 16	54	107	0.64
79	15, 16	54	107	0.64
80	15, 16, 27	54	107	0.64
81	15, 16	60	182	1.13
82	15, 16	60	182	1.13
83	15, 16	60	182	1.13
84	15, 27	38	80	0.44
85	15, 16	36	70	0.37
86	15, 16	36	70	0.37
87	15, 16, 26	67	127	0.79
88	15, 16, 26	55	107	0.64
89	15, 16	55	107	0.64
90	15, 16	53	100	0.61
91	17, 18	98	240	1.49
92	17, 18	98	240	1.49
93	17, 18	98	240	1.49
94	17, 18, 26	54	111	0.68
95	17, 18	54	111	0.68
96	17, 18	54	111	0.68
97	17, 18	54	111	0.68
98	17, 18	64	142	0.88
99	17, 18	65	142	0.88
100	17, 18, 27	54	110	0.68

NOTICE 29th, 1986 S-9194

CONDOMINIUM ACT

STRATA LOT	SHEET NUMBER	FORM 1 SCHEDULE OF UNIT ENTITLEMENT	FORM 2 SCHEDULE OF INTEREST UPON DESTRUCTION	FORM 3 SCHEDULE OF VOTING RIGHTS
101	17, 18	67	142	0.88
102	17, 18	67	142	0.88
103	17, 18, 27	96	117	0.71
104	17, 18	96	117	0.71
105	17, 18	96	117	0.71
106	17, 18, 26	71	145	0.88
107	17, 18, 26	71	145	0.88
108	17, 18	53	113	0.69
109	17, 18	53	113	0.69
110	19, 20	98	260	1.56
111	19, 20	98	260	1.56
112	19, 20	98	260	1.56
113	19, 20, 26	54	126	0.78
114	19, 20, 26	54	126	0.78
115	19, 20	36	80	0.50
116	19, 20	36	80	0.50
117	19, 20	36	80	0.50
118	19, 20, 27	54	126	0.78
119	19, 20	54	126	0.78
120	19, 20	54	126	0.78
121	19, 20, 27	56	130	0.81
122	19, 20, 27	56	130	0.81
123	19, 20	56	130	0.81
124	19, 20	56	130	0.81
125	19, 20, 26	67	155	0.96
126	19, 20, 26	67	155	0.96
127	19, 20	54	127	0.78
128	19, 20	52	127	0.76
129	21, 22	56	130	0.81
130	21, 22	56	130	0.81
131	21, 22	54	126	0.78
132	21, 22, 26	54	126	0.78
133	21, 22	54	126	0.78
134	21, 22	54	126	0.78
135	21, 22	64	153	0.96
136	21, 22	64	153	0.96
137	21, 22, 27	54	126	0.78
138	21, 22, 27	54	126	0.78
139	21, 22	57	173	1.07
140	21, 22, 27	57	173	1.07
141	21, 22, 27	56	160	0.99
142	21, 22	56	160	0.99
143	21, 22	76	180	1.11
144	21, 22	67	165	1.01
145	21, 22, 26	54	140	0.86
146	21, 22	54	140	0.86
147	21, 22	53	140	0.86
148	23, 24	99	300	1.80
149	23, 24	99	300	1.80
150	23, 24	53	190	1.18

NOTICE 29th, 1986 S-9194

WWW.DCSPLANETS.COM

SECOND SHEET-SHEET 7 OF 29 SHEETS.

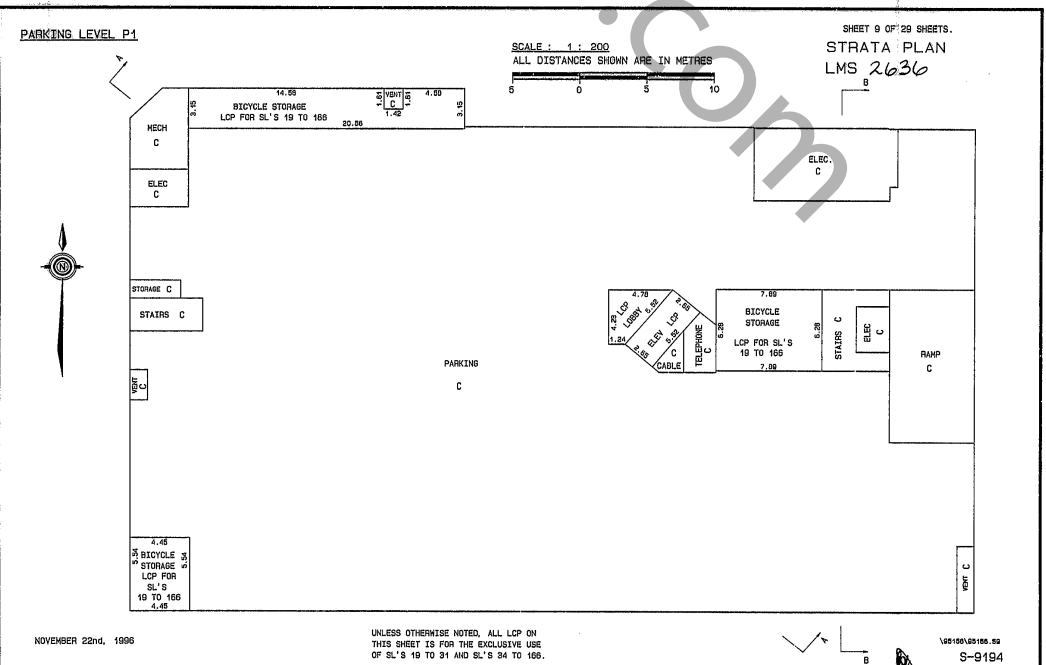
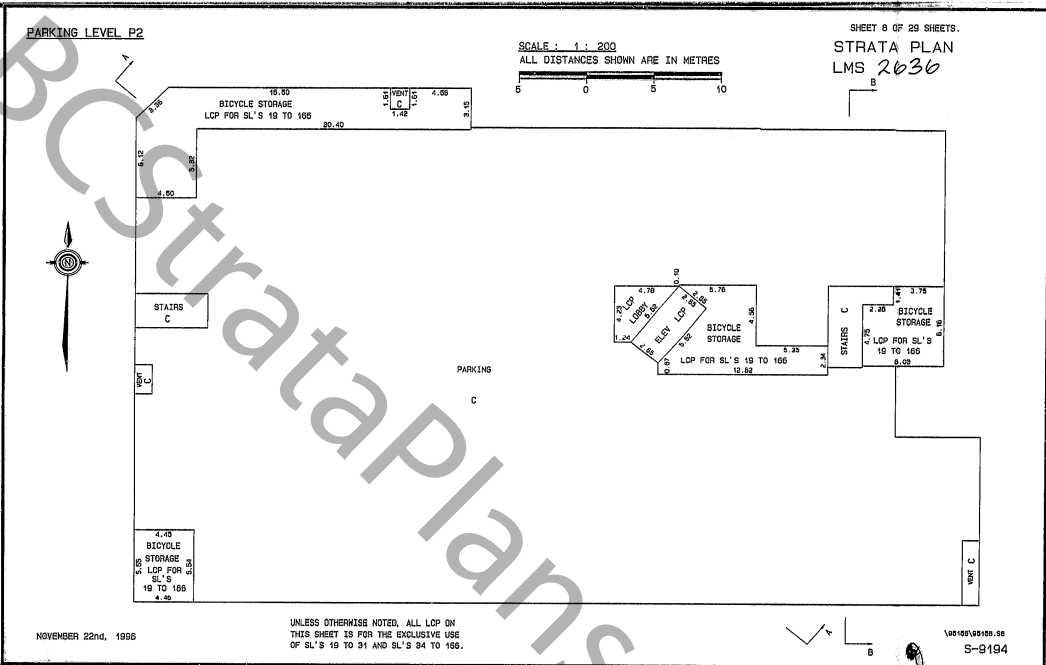
STRATA PLAN
LMS 2636

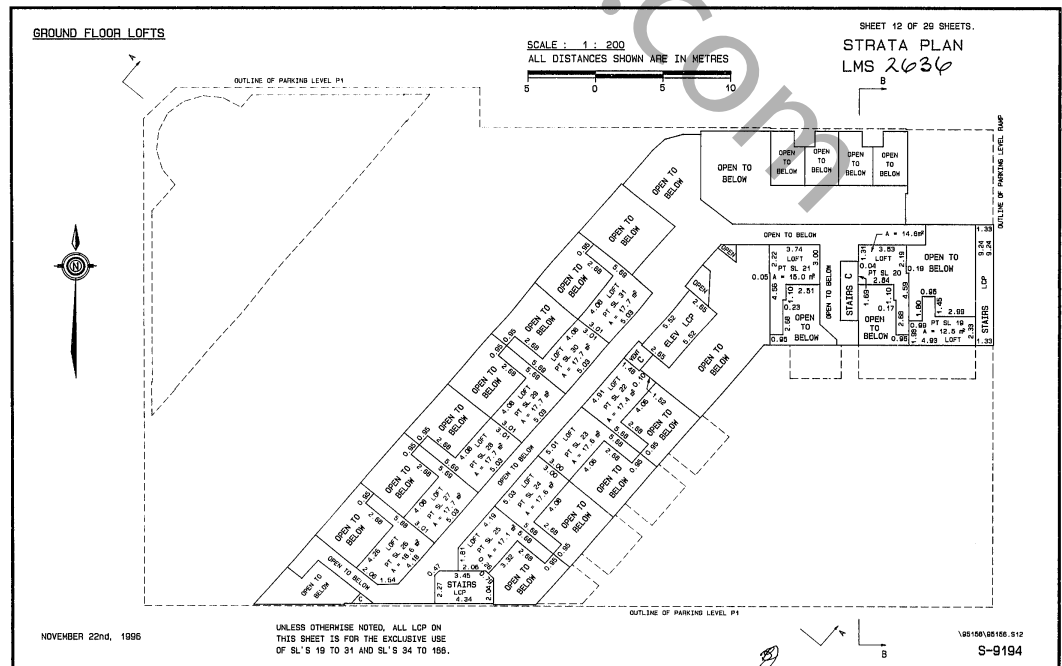
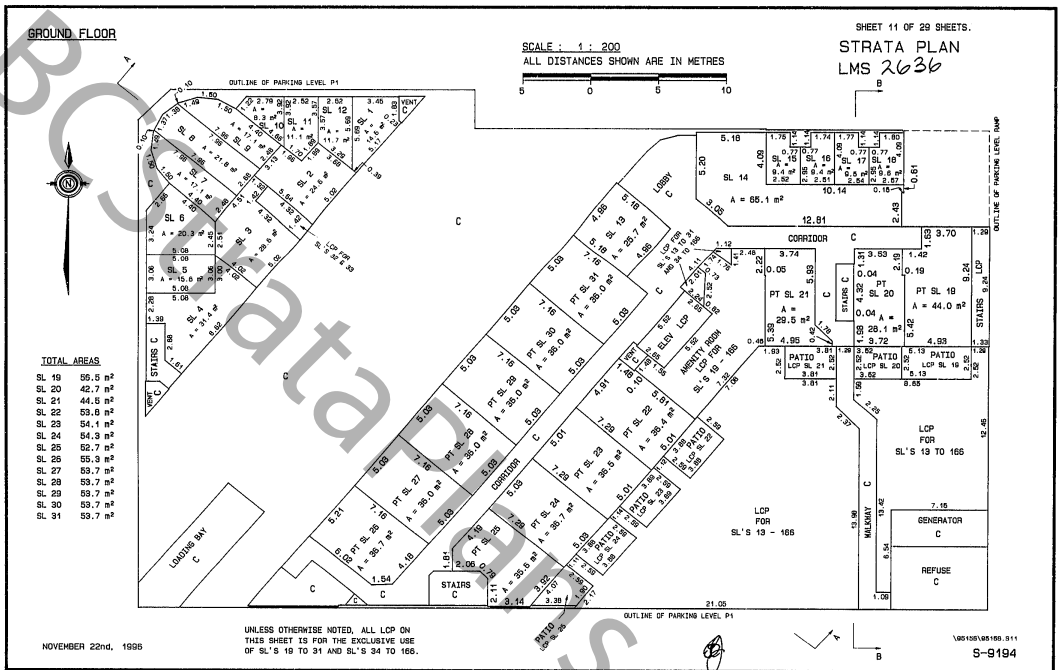
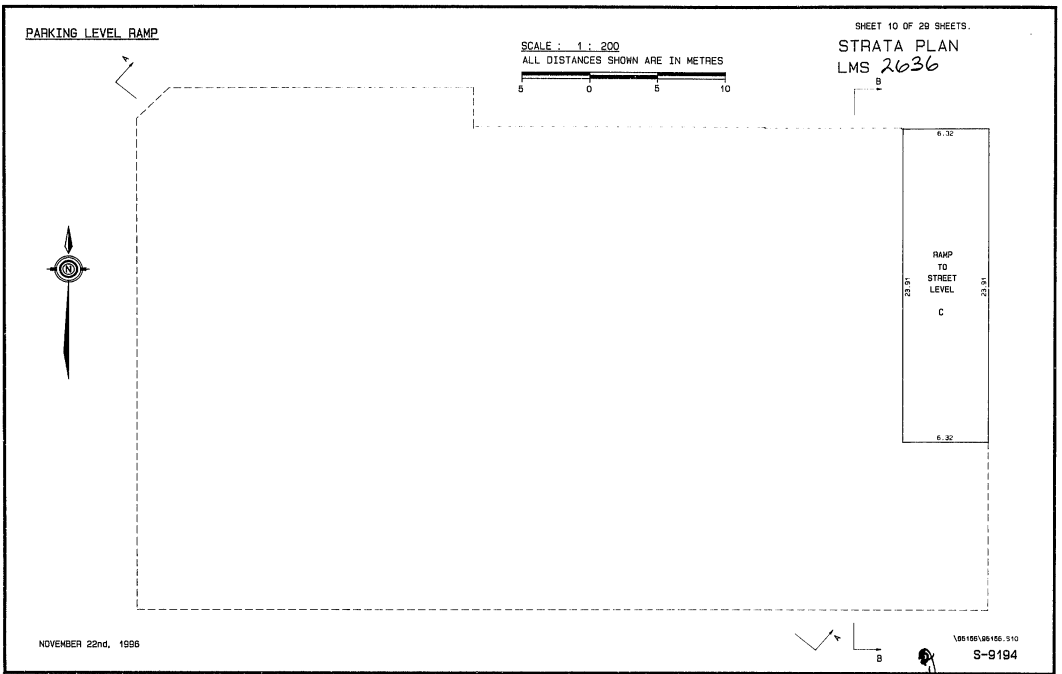
CONDOMINIUM ACT

STRATA LOT	SHEET NUMBER	FORM 1 SCHEDULE OF UNIT ENTITLEMENT	FORM 2 SCHEDULE OF INTEREST FROM RESERVATION	FORM 3 SCHEDULE OF VOTING RIGHTS
181	23, 26	36	140	1
182	23, 26	33	142	1
183	23, 24	53	146	1
184	23, 24	83	236	1
185	23, 24	65	171	1
186	23, 24	54	150	1
187	23, 24, 27	53	150	1
188	23, 24	67	190	1
189	23, 24	53	160	1
190	23, 24, 27	55	150	1
191	23, 24	56	197	1
192	23, 24	52	190	1
193	23, 24, 26	52	180	1
194	23, 24	52	150	1
195	23, 24	52	150	1
196	23, 24	52	150	1
197	23, 24	52	150	1
198	23, 24	52	150	1
199	23, 24	52	150	1
200	23, 24	52	150	1
201	23, 24	52	150	1
202	23, 24	52	150	1
203	23, 24	52	150	1
204	23, 24	52	150	1
205	23, 24	52	150	1
206	23, 24	52	150	1
207	23, 24	52	150	1
208	23, 24	52	150	1
209	23, 24	52	150	1
210	23, 24	52	150	1
211	23, 24	52	150	1
212	23, 24	52	150	1
213	23, 24	52	150	1
214	23, 24	52	150	1
215	23, 24	52	150	1
216	23, 24	52	150	1
217	23, 24	52	150	1
218	23, 24	52	150	1
219	23, 24	52	150	1
220	23, 24	52	150	1
221	23, 24	52	150	1
222	23, 24	52	150	1
223	23, 24	52	150	1
224	23, 24	52	150	1
225	23, 24	52	150	1
226	23, 24	52	150	1
227	23, 24	52	150	1
228	23, 24	52	150	1
229	23, 24	52	150	1
230	23, 24	52	150	1
231	23, 24	52	150	1
232	23, 24	52	150	1
233	23, 24	52	150	1
234	23, 24	52	150	1
235	23, 24	52	150	1
236	23, 24	52	150	1
237	23, 24	52	150	1
238	23, 24	52	150	1
239	23, 24	52	150	1
240	23, 24	52	150	1
241	23, 24	52	150	1
242	23, 24	52	150	1
243	23, 24	52	150	1
244	23, 24	52	150	1
245	23, 24	52	150	1
246	23, 24	52	150	1
247	23, 24	52	150	1
248	23, 24	52	150	1
249	23, 24	52	150	1
250	23, 24	52	150	1
251	23, 24	52	150	1
252	23, 24	52	150	1
253	23, 24	52	150	1
254	23, 24	52	150	1
255	23, 24	52	150	1
256	23, 24	52	150	1
257	23, 24	52	150	1
258	23, 24	52	150	1
259	23, 24	52	150	1
260	23, 24	52	150	1
261	23, 24	52	150	1
262	23, 24	52	150	1
263	23, 24	52	150	1
264	23, 24	52	150	1
265	23, 24	52	150	1
266	23, 24	52	150	1
267	23, 24	52	150	1
268	23, 24	52	150	1
269	23, 24	52	150	1
270	23, 24	52	150	1
271	23, 24	52	150	1
272	23, 24	52	150	1
273	23, 24	52	150	1
274	23, 24	52	150	1
275	23, 24	52	150	1
276	23, 24	52	150	1
277	23, 24	52	150	1
278	23, 24	52	150	1
279	23, 24	52	150	1
280	23, 24	52	150	1
281	23, 24	52	150	1
282	23, 24	52	150	1
283	23, 24	52	150	1
284	23, 24	52	150	1
285	23, 24	52	150	1
286	23, 24	52	150	1
287	23, 24	52	150	1
288	23, 24	52	150	1
289	23, 24	52	150	1
290	23, 24	52	150	1
291	23, 24	52	150	1
292	23, 24	52	150	1
293	23, 24	52	150	1
294	23, 24	52	150	1
295	23, 24	52	150	1
296	23, 24	52	150	1
297	23, 24	52	150	1
298	23, 24	52	150	1
299	23, 24	52	150	1
300	23, 24	52	150	1

NOVEMBER 22nd, 1995

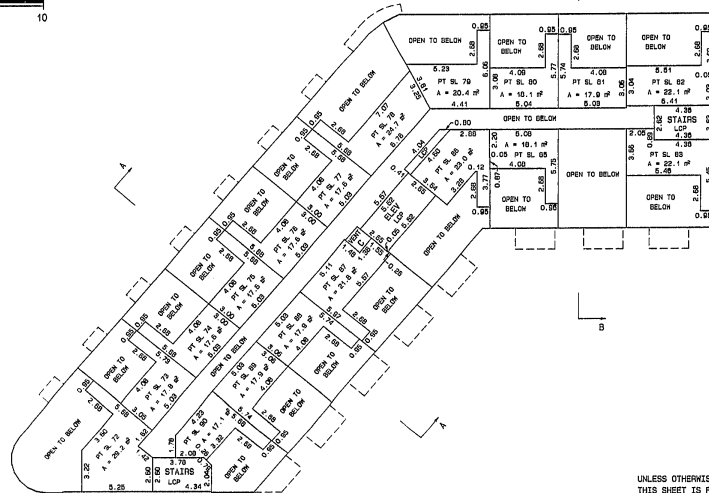
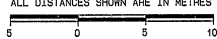
WWW.BCStrataPlans.com





FOURTH FLOOR LOFTS

SCALE : 1 : 200
ALL DISTANCES SHOWN ARE IN METRES



SHEET 16 OF 29 SHEETS.
STRATA PLAN
LMS 2636

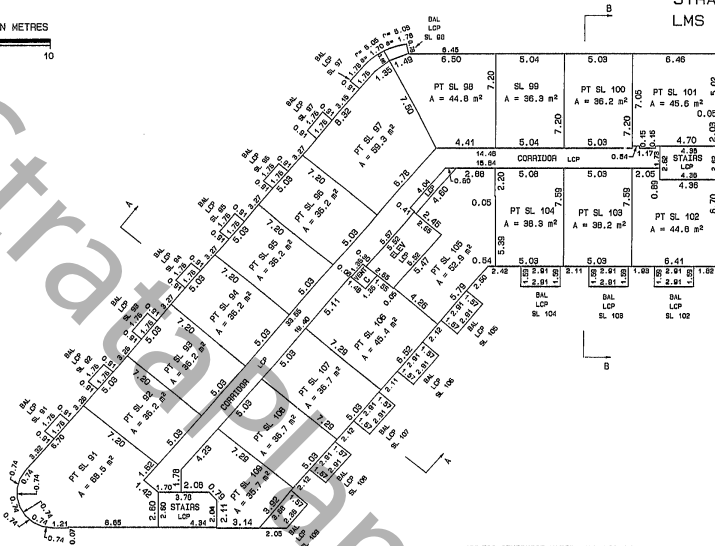
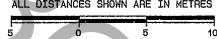
UNLESS OTHERWISE NOTED, ALL LCP ON THIS SHEET IS FOR THE EXCLUSIVE USE OF SL'S 19 TO 31 AND SL'S 34 TO 166.

NOVEMBER 22nd, 1996

V05100105.516 S-9194

FIFTH FLOOR

SCALE : 1 : 200
ALL DISTANCES SHOWN ARE IN METRES



SHEET 17 OF 29 SHEETS.
STRATA PLAN
LMS 2636

TOTAL AREAS

SL 91	97.0 m ²
SL 92	59.9 m ²
SL 93	59.9 m ²
SL 94	59.9 m ²
SL 95	59.9 m ²
SL 96	59.9 m ²
SL 97	84.0 m ²
SL 98	65.4 m ²
SL 99	59.9 m ²
SL 100	59.9 m ²
SL 101	67.1 m ²
SL 102	55.0 m ²
SL 103	55.0 m ²
SL 104	56.1 m ²
SL 105	75.0 m ²
SL 106	67.2 m ²
SL 107	54.3 m ²
SL 108	54.3 m ²
SL 109	52.0 m ²

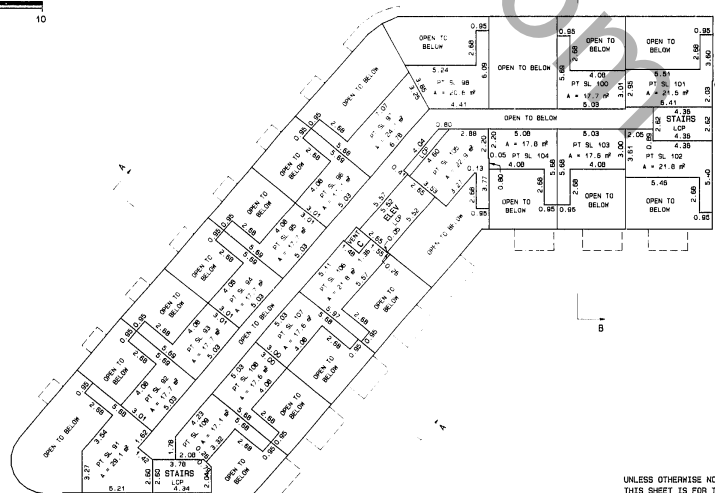
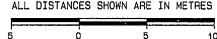
UNLESS OTHERWISE NOTED, ALL LCP ON THIS SHEET IS FOR THE EXCLUSIVE USE OF SL'S 19 TO 31 AND SL'S 34 TO 166.

NOVEMBER 22nd, 1996

V05100105.517 S-9194

FIFTH FLOOR LOFTS

SCALE : 1 : 200
ALL DISTANCES SHOWN ARE IN METRES

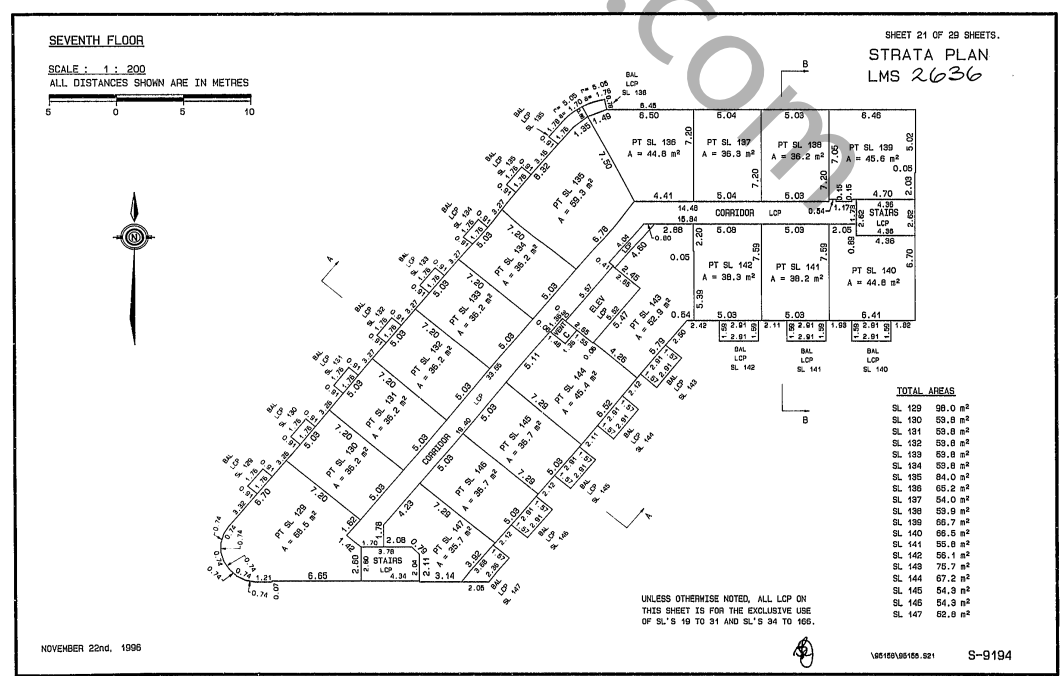
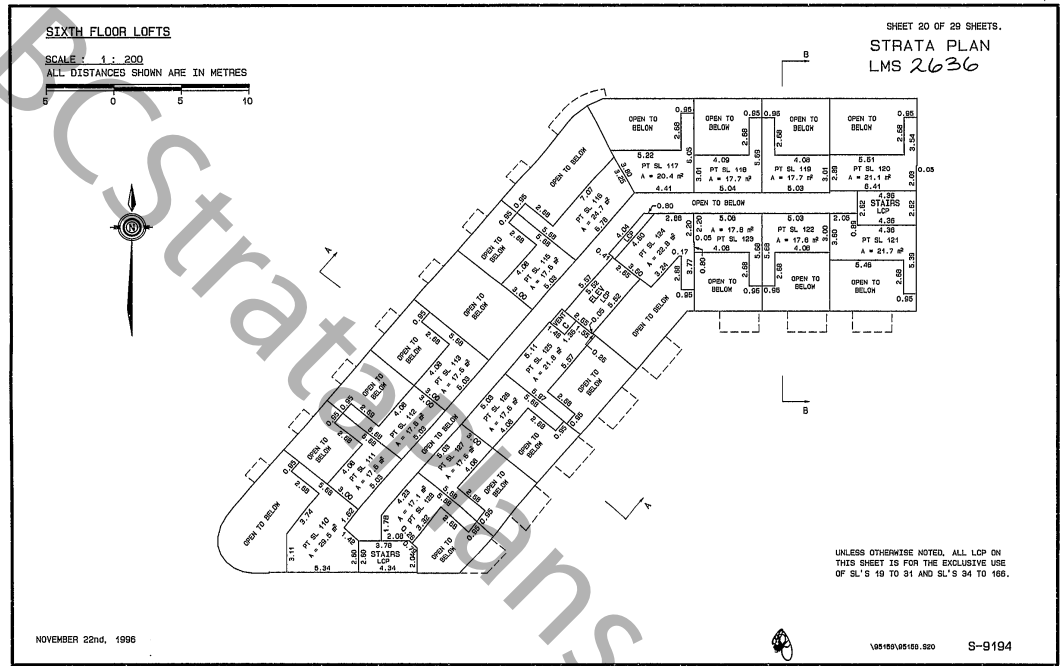
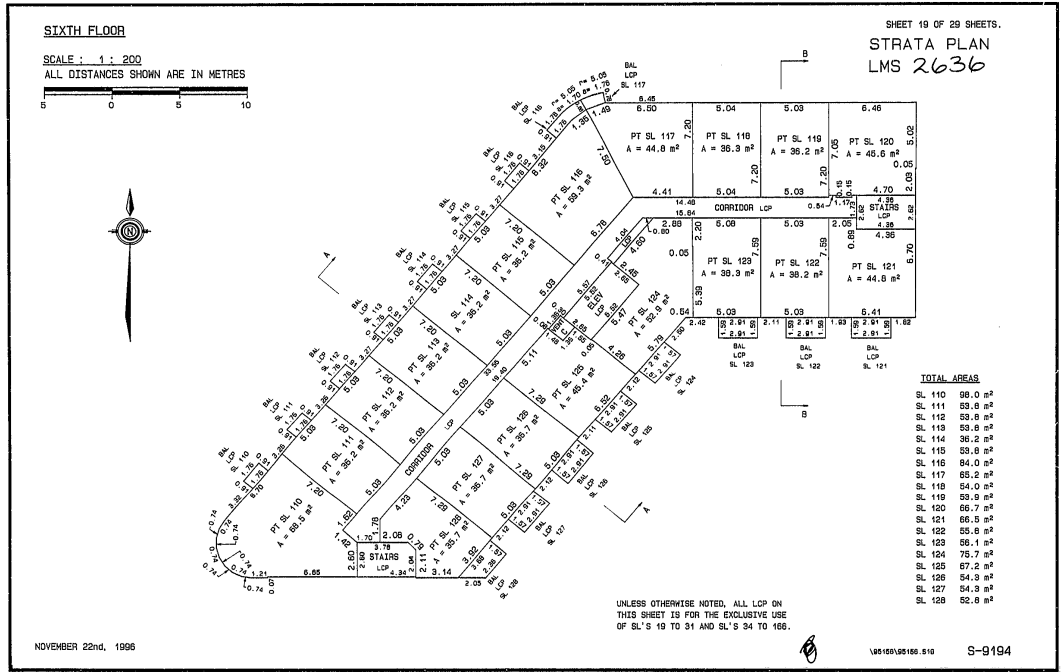


SHEET 18 OF 29 SHEETS.
STRATA PLAN
LMS 2636

UNLESS OTHERWISE NOTED, ALL LCP ON THIS SHEET IS FOR THE EXCLUSIVE USE OF SL'S 19 TO 31 AND SL'S 34 TO 166.

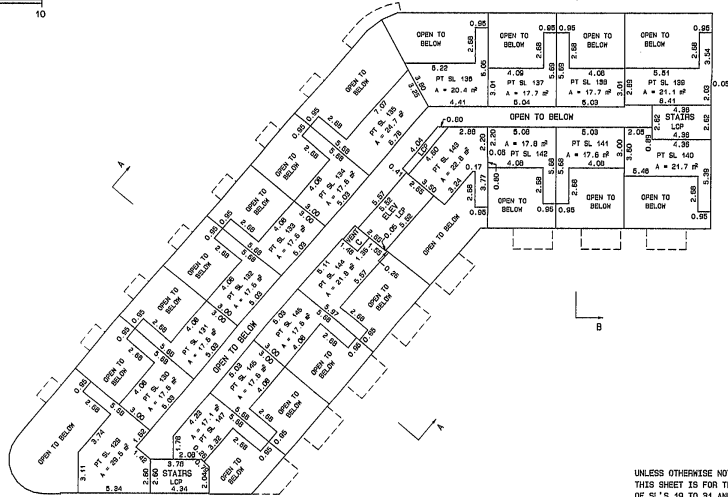
NOVEMBER 22nd, 1996

V05100105.518 S-9194



SEVENTH FLOOR LOFTS

SCALE : 1 : 200
ALL DISTANCES SHOWN ARE IN METRES



SHEET 22 OF 29 SHEETS.
STRATA PLAN
LMS 2636

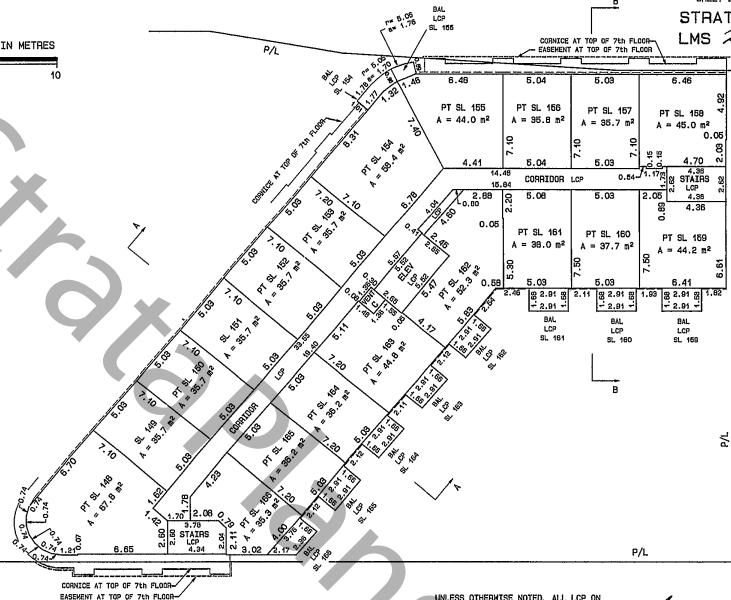
UNLESS OTHERWISE NOTED, ALL LCP ON THIS SHEET IS FOR THE EXCLUSIVE USE OF SL'S 10 TO 31 AND SL'S 34 TO 166.

NOVEMBER 22nd, 1996

S-9194

EIGHTH FLOOR

SCALE : 1 : 200
ALL DISTANCES SHOWN ARE IN METRES



SHEET 23 OF 29 SHEETS.
STRATA PLAN
LMS 2636

TOTAL AREAS

SL 149	99.4 m ²
SL 149	25.7 m ²
SL 150	53.9 m ²
SL 151	35.7 m ²
SL 152	53.3 m ²
SL 153	53.3 m ²
SL 154	83.1 m ²
SL 155	64.5 m ²
SL 156	93.5 m ²
SL 157	53.4 m ²
SL 158	67.1 m ²
SL 159	82.5 m ²
SL 160	55.3 m ²
SL 161	55.0 m ²
SL 162	76.1 m ²
SL 163	86.6 m ²
SL 164	53.8 m ²
SL 165	53.8 m ²
SL 166	52.4 m ²

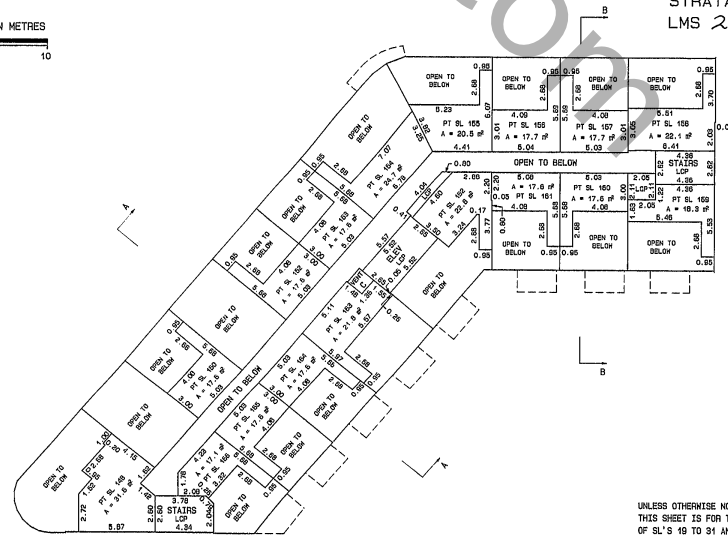
UNLESS OTHERWISE NOTED, ALL LCP ON THIS SHEET IS FOR THE EXCLUSIVE USE OF SL'S 19 TO 31 AND SL'S 34 TO 166.

NOVEMBER 22nd, 1996

S-9194

EIGHTH FLOOR LOFTS

SCALE : 1 : 200
ALL DISTANCES SHOWN ARE IN METRES



SHEET 24 OF 29 SHEETS.
STRATA PLAN
LMS 2636

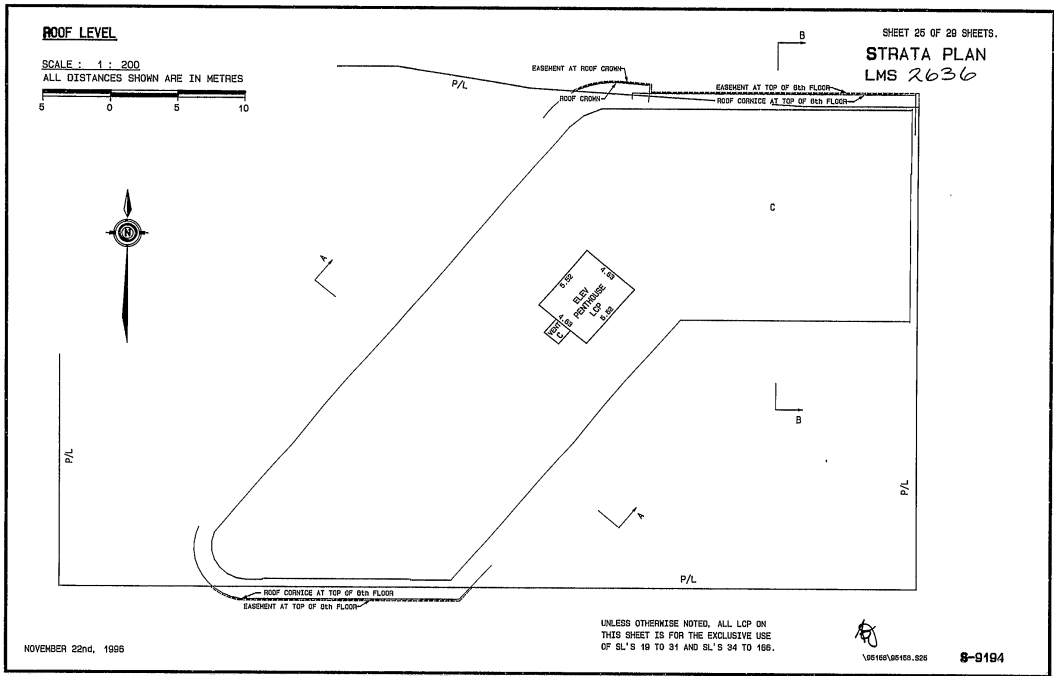
UNLESS OTHERWISE NOTED, ALL LCP ON THIS SHEET IS FOR THE EXCLUSIVE USE OF SL'S 19 TO 31 AND SL'S 34 TO 166.

NOVEMBER 22nd, 1996

S-9194

ROOF LEVEL

SCALE : 1 : 200
ALL DISTANCES SHOWN ARE IN METRES



SHEET 26 OF 28 SHEETS.
STRATA PLAN
LMS 2636

NOVEMBER 22nd, 1998

UNLESS OTHERWISE NOTED, ALL LCP ON THIS SHEET IS FOR THE EXCLUSIVE USE OF SL'S 19 TO 31 AND SL'S 34 TO 166.

1/05160/05166.026 **S-9194**

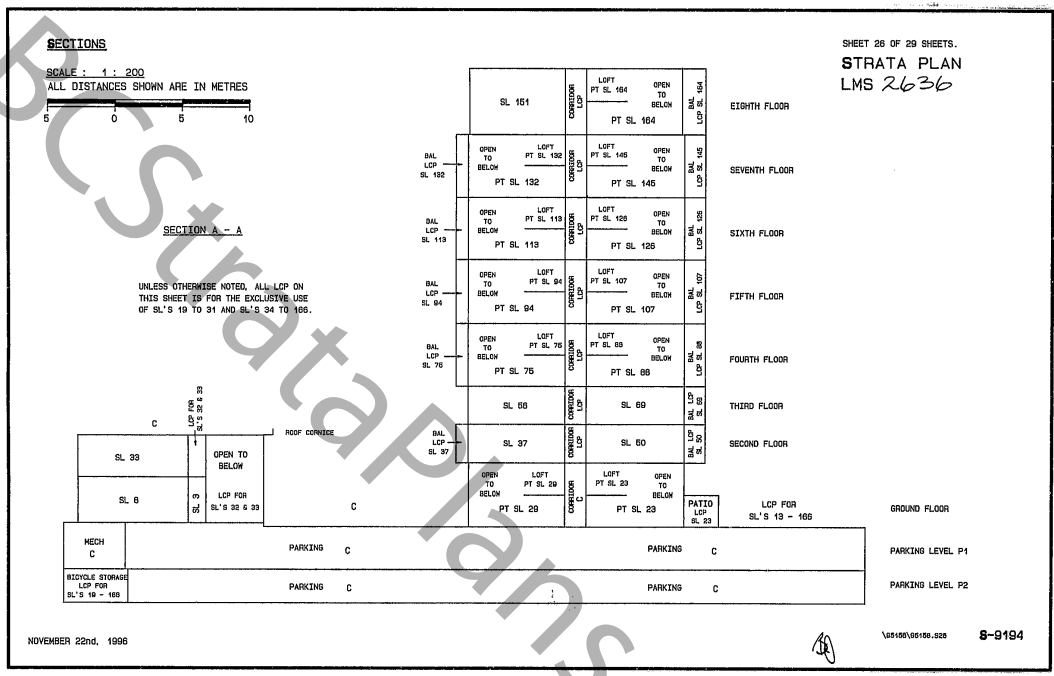
SECTIONS

SCALE : 1 : 200
ALL DISTANCES SHOWN ARE IN METRES



SECTION A - A

UNLESS OTHERWISE NOTED, ALL LCP ON THIS SHEET IS FOR THE EXCLUSIVE USE OF SL'S 19 TO 31 AND SL'S 34 TO 166.



SHEET 26 OF 28 SHEETS.
STRATA PLAN
LMS 2636

NOVEMBER 22nd, 1998

1/05160/05166.026 **S-9194**

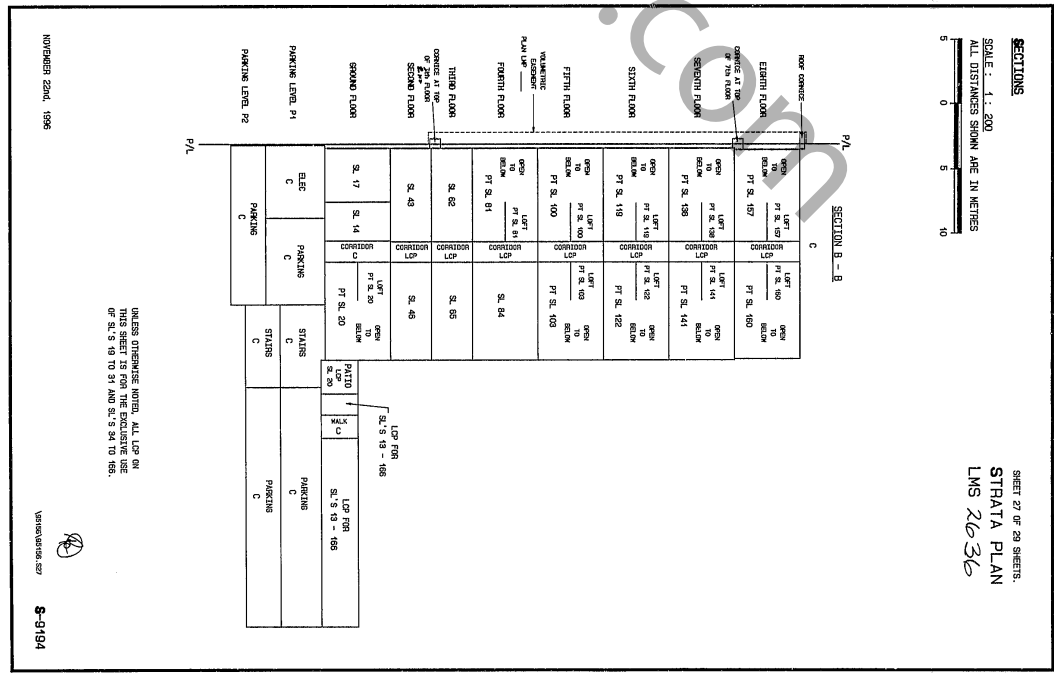
SECTIONS

SCALE : 1 : 200
ALL DISTANCES SHOWN ARE IN METRES



SECTION B - B

UNLESS OTHERWISE NOTED, ALL LCP ON THIS SHEET IS FOR THE EXCLUSIVE USE OF SL'S 19 TO 31 AND SL'S 34 TO 166.



SHEET 27 OF 28 SHEETS.
STRATA PLAN
LMS 2636

NOVEMBER 22nd, 1998

1/05160/05166.026 **S-9194**

